

Consumers

Board Officers:
President - Vice-President – Treasurer - Secretary

Board Committees
Finance/Audit - Program - Personnel

Chief Executive Officer
Kenyatta Stephens

Planning and Development - Certified Community Behavioral Health Clinic

Director of Administrative Operations/Executive Assistant
Cynthia McDaniel

Executive Assistant /Fund Development Specialist
Tangela Devezin

Chief Operating Officer
Dr. LaTonya Shelton

Management Information Technician
Tayler Thompson

Corporate Compliance Officer
Monica Britton

Chief Financial Officer
Scott Kline

Mobile Wellness & Health

Family Preservation/Juvenile Justice Services

Fiduciary Services

Fiscal Management

In School Services

Prevention Services

Risk Management

HR Management

Community Based Services

Substance Abuse

Behavioral Health Services

Early Childhood

Suicide Prevention JFS

Executive Vice President
Nicole McKinney

IT & Facility Management
Chuck Dulin

Community Engagement

Community Relations Administrative Support
Open

Vice President of Quality & Performance Improvement
Kimberly O’Neal

Positive Youth Development

Black Family Development, Inc.
Agency Org Chart
Updated 7/22, 4/23, 8/23

Recipient Rights
Ashley Ballard – Dr. La Tonya Shelton

Customer Service Representative
Javon Reese – Dr. LaTonya Shelton

Organizational Chart Summary

Consumers

Board of Directors
 Chairperson – Vice Chairperson
 Treasurer - Secretary

Board Committees
 Finance/Audit - Program - Personnel

Chief Executive Officer
 Kenyatta Stephens

Community Relations Admin Support
 Open

Director of Administrative
 Operations/Executive
 Assistant
 Cynthia McDaniel

Executive Assistant/Fund
 Development Specialist
 Tangela Devezin

Corporate Compliance Officer
 Monica Britton

Management Information Technician
 Tayler Thompson

Director of IT & Facility
 Manager
 Chuck Dulin

Program Director
 Kevin Bryant

Chief Financial Officer
 Scott Kline

Chief Operating Officer
 Dr. LaTonya Shelton

Executive
 Assistant
 Brittany Williams

VP Quality &
 Performance Improvement
 Kimberly O'Neal

Customer Service Representative
 Javon Reese – Dr. LaTonya
 Shelton

System
 Administrator
 Tyre Buckley

Program Director
 Derek Blackmon

Finance Director
 Alessia Baker-Giles

VP J.J.S. CMO
 Program
 Samantha Perry

Utilization Review
 Manager
 Karen Streeter

Recipient Rights
 Ashley Ballard – Dr.
 LaTonya Shelton

Network & Computer
 Systems Administrator
 Derek Holloway

HR Recruiter
 Contractual

Human Resources Director
 Monica Britton

VP Behavioral Health
 Elise Goulbourne

Intake
 Gayle Metcalf
 Wiltrice Rodgers

Director of Quality
 Systems
 Sundra Kollie

Van Driver/Maintenance
 Preston Taylor

HR Generalist
 Alicia Lorick

Accounting Manager
 Faye Peterson

Director of Early
 Childhood Services &
 Community Impact
 Wendy LaMarr

QA Specialist
 Carly Steele

HR Generalist II
 Corlis Stokes

Payroll Specialist (Staff Acct)
 Open Position

CMO and Behavioral Health
 Accounting Supervisor
 Ashley Stinson

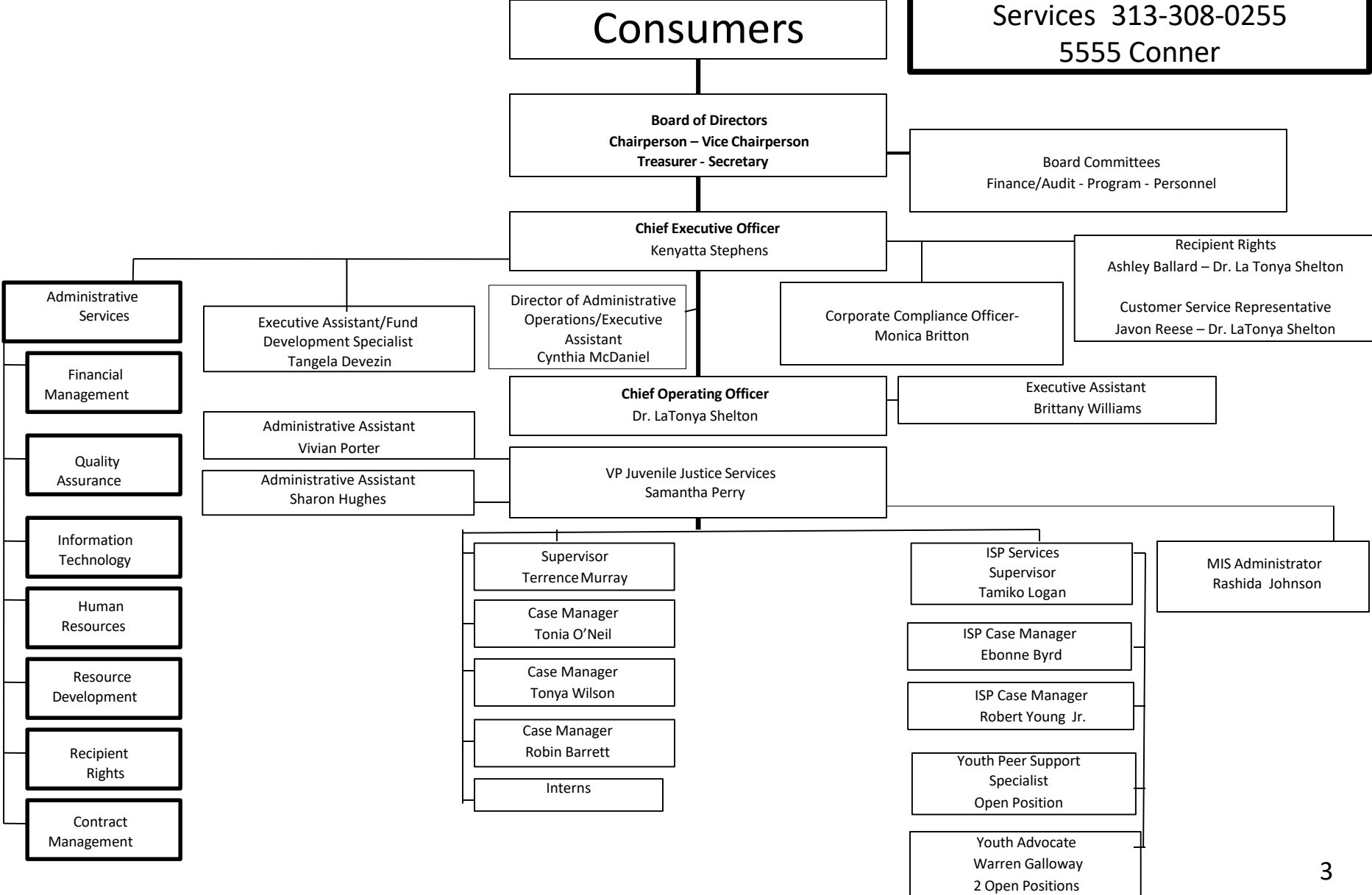
Interns

QA Specialist
 Ashley Pickens

Cost Accountant
 Hernando Sierra

Contract Manager
 Vincent Teat

**Family Preservation
Juvenile Justice - Care
Management Organization**
Services 313-308-0255
5555 Conner



Behavioral Health
Org. Chart
313-758-0150
Main Office & 5555 Conner

Consumers

Board of Directors
 Chairperson – Vice Chairperson
 Treasurer - Secretary

Board Committees
 Finance/Audit - Program - Personnel

Chief Executive Officer
 Kenyatta Stephens

Recipient Rights
 Ashley Ballard – Dr. LaTonya Shelton

Customer Service Representative
 Javon Reese – Dr. La Tonya Shelton

Corporate Compliance – Monica Britton
 Director of Administrative Operations/Executive
 Assistant - Cynthia McDaniel
 Executive Assistant/Fund Development Specialist
 Tangela Devezin

Chief Operating Officer
 Dr. LaTonya Shelton

Executive Assistant
 Brittany Williams

Vice President Behavioral Health
 Elise Goulbourne

Psychiatrists:
 Dr. Lisa Fuller
 Dr. Rosalind Spells

Behavioral Health Director STAGES – DWIHN
 Sonya Shelman

Wraparound – PMTO – SED
 Waiver Supervisor
 Khalea Foy

Community Team
 Community Stakeholders

Therapist
 Morgan
 Armstrong

Administrative
 Assistant - Lisa Atkins

Therapist
 Satira Collier

Child & Family Team
 Natural & Formal Supports

Therapist
Open Position

Wraparound
 Facilitator
 Donisha Alexander

Wraparound Facilitator
 Terena Rice

Parent
 Support Partner
 Robert
 Pettaway Jr.

Parent and Student
 Support Counselor
 Zenobia Awada

School Based Services – School Success and MH Medicaid School Based

Supervisor
 Se'ara Davis

Admin Assistant
 Marion Jones

Supervisor
 Margeutta Turner

Prevention Counselor
 Yasmine Bates

Therapist
 Amber Kilanowski

Prevention Counselor
 Juana Scandrick

Prevention Counselor
 Velda Hunter

Therapist
 Tamitha Allman

Prevention Counselor
Open Position

Prevention Counselor
 Tiffany Blandford

Therapist
 Michaela
 Cosand

Interns

Interns

Medical Billing Specialist-
 Gloria Smith

Therapist
 Anquinette Mosley

Clinician
 Tracy Tayler

Interns

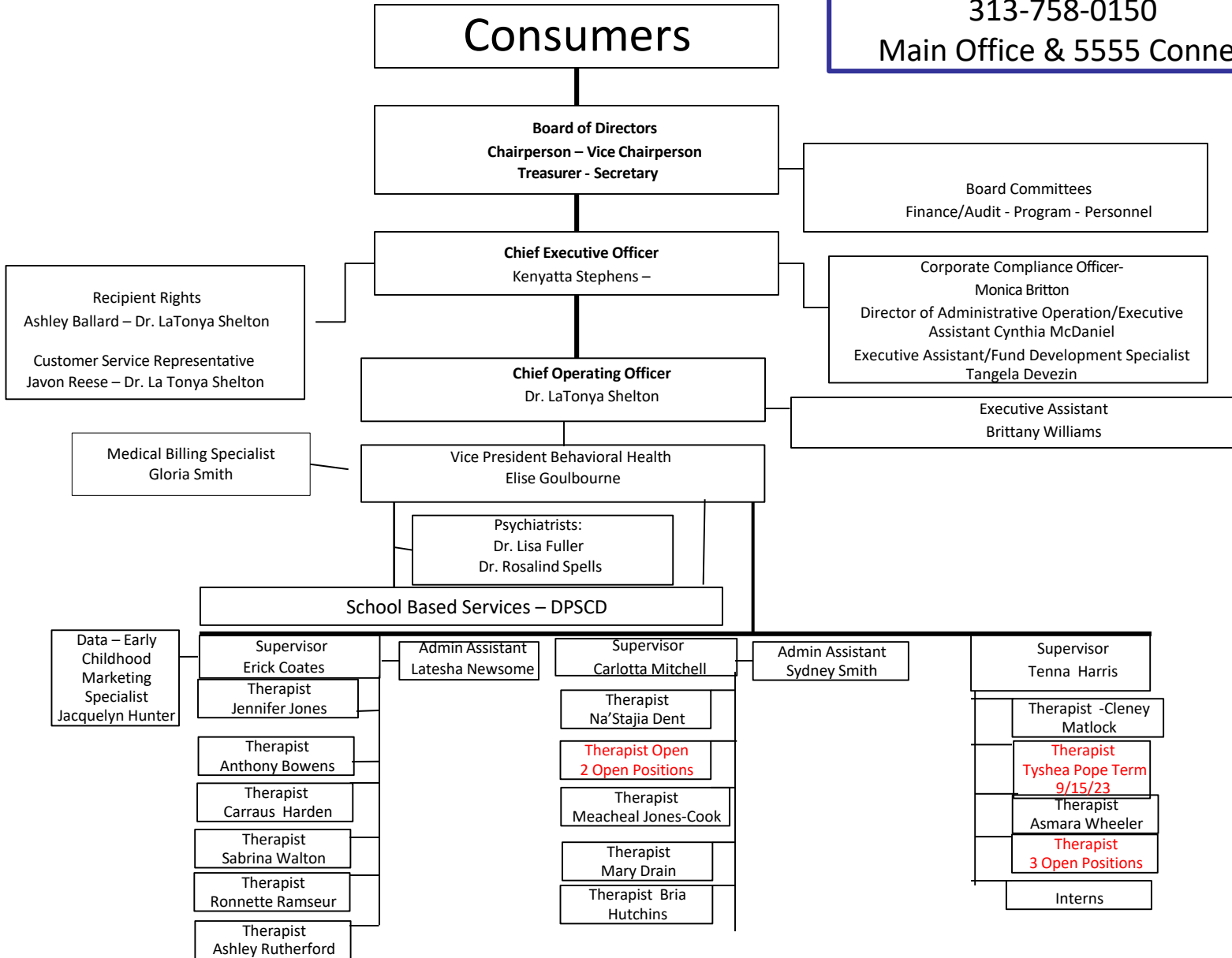
Data Specialist/Administrative
Assistant
Open Position

Case Manager
 Paula Armstrong

Co-Occurring
 Therapist
 Danayzha Williams

Clinician
 Tylia Green

**Behavioral Health
Continued (DPSCD)
Org Chart
313-758-0150
Main Office & 5555 Conner**



Prevention
 YAP, United Way, Positive Youth
 Development, Family Preservation
 and Building Foundations
 313-758-0150 Main Office

Consumers

Board of Directors
 Chairperson – Vice Chairperson
 Treasurer - Secretary

Board Committees
 Finance/Audit - Program - Personnel

Recipient Rights
 Ashley Ballard – Dr. LaTonya Shelton

 Customer Service Representative
 Javon Reese – Dr. LaTonya Shelton

Chief Executive Officer
 Kenyatta Stephens

Corporate Compliance Officer
 Monica Britton
 Director of Administrative Operations/Executive Assistant
 Cynthia McDaniel
 Executive Assistant/Fund Development Specialist
 Tangela Devezin

Administrative Assistant
 Sharon Hughes

Chief Operating Officer
 Dr. LaTonya Shelton

Executive Assistant
 Brittany Williams

Vice President Juvenile Justice
 Samantha Perry

United Way Family Connections &
 Building Foundations
 Program Manager
 Cynthia Williams

Y.A.P.
 UW Family Connections
 Program Mgr.
 Cynthia Williams

UW Counselor – Donja White

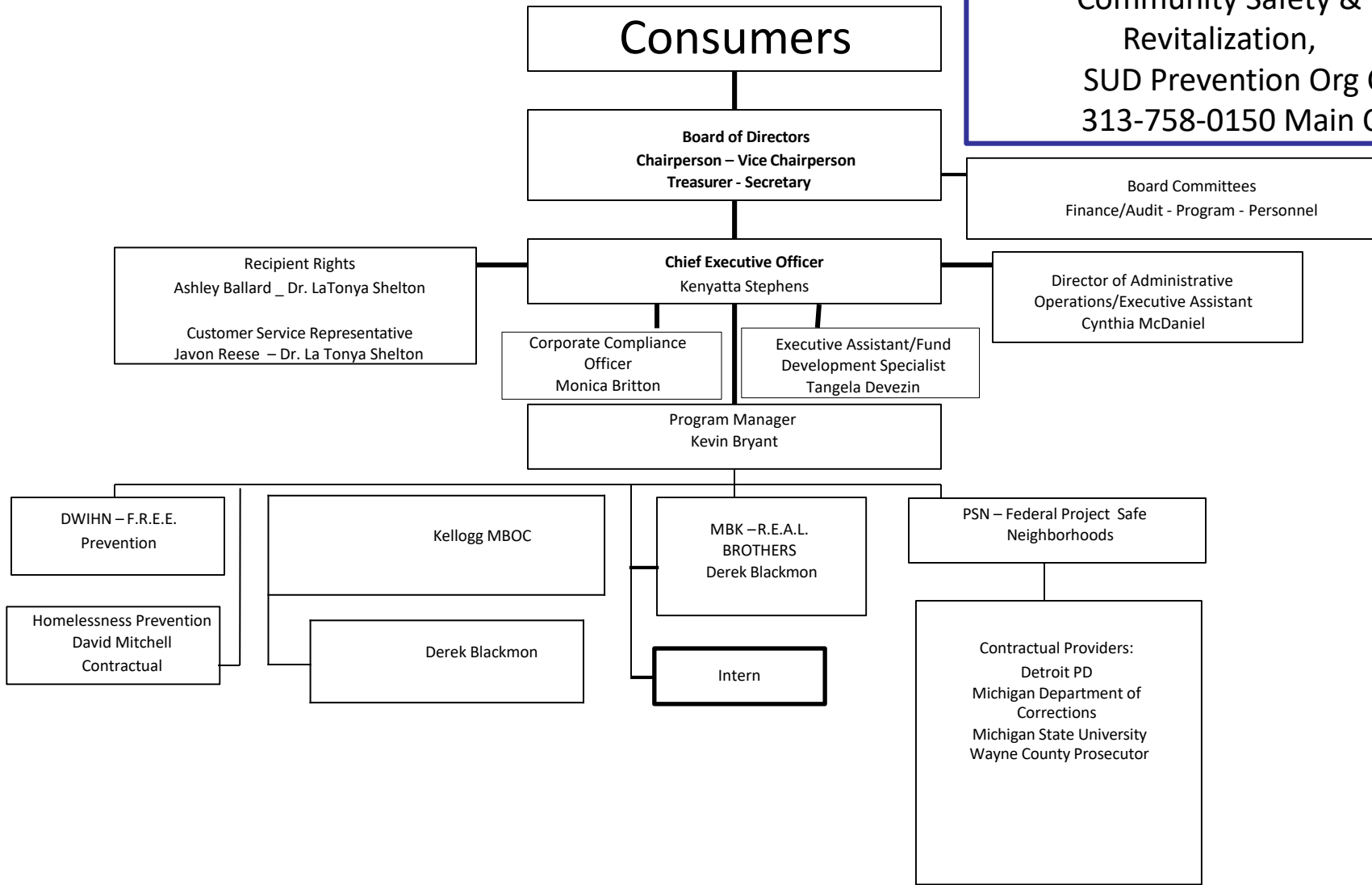
YAP Counselor
 David Moseley

Interns

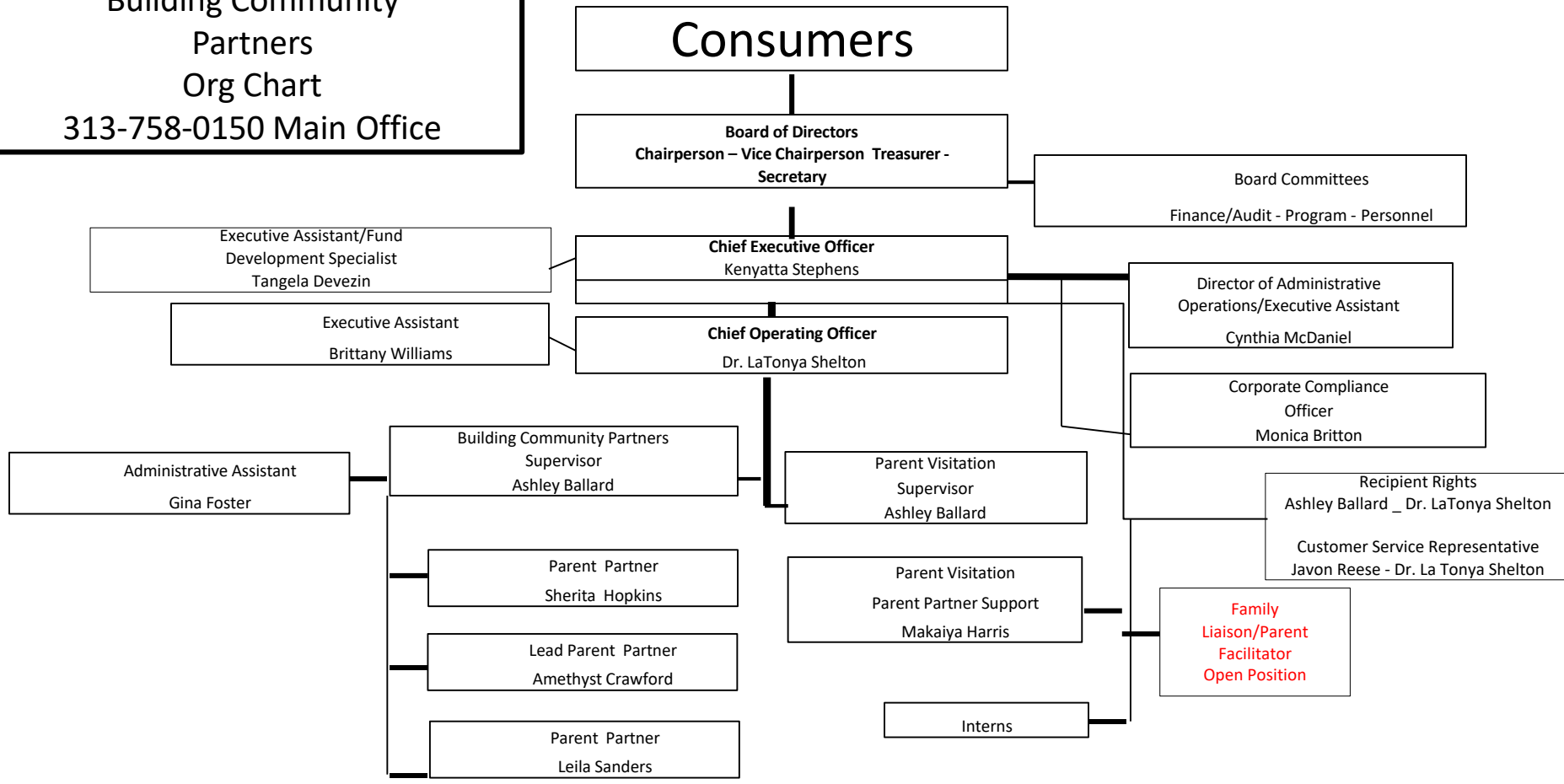
YAP Counselor
 Charone Carter

Intern

Prevention
 Community Relations:
 Homeless Prevention,
 Community Safety &
 Revitalization,
 SUD Prevention Org Chart
 313-758-0150 Main Office



Family Preservation
 Parent Visitation,
 Building Community
 Partners
 Org Chart
 313-758-0150 Main Office



Prevention - Early Learning Programs
313-758-0150 Main Office

Consumers

Board of Directors
Chairperson – Vice Chairperson
Treasurer - Secretary

Board Committees
Finance/Audit - Program - Personnel

Chief Executive Officer
Kenyatta Stephens

Director of Administrative
Operations/Executive
Assistant
Cynthia McDaniel

Corporate Compliance Officer
Monica Britton

Chief Operating Officer
Dr. LaTonya Shelton

Recipient Rights
Ashley Ballard – Dr. LaTonya Shelton

Executive Assistant/Fund Development
Specialist
Tangela Devezin

Customer Service Representative
Javon Reese – Dr. La Tonya Shelton

Director of Early Childhood Services & Community
Impact
Wendy LaMarr

Executive Assistant
Brittany Williams

Bloomberg/Brilliant / Detroit
LENA Start

PAT Expansion

Parents As Teachers
Program Supervisor
Keisha Render

Family Liaison/Parent
Educator
Open Position

Early Childhood Intervention Specialist
La'Risha Gay

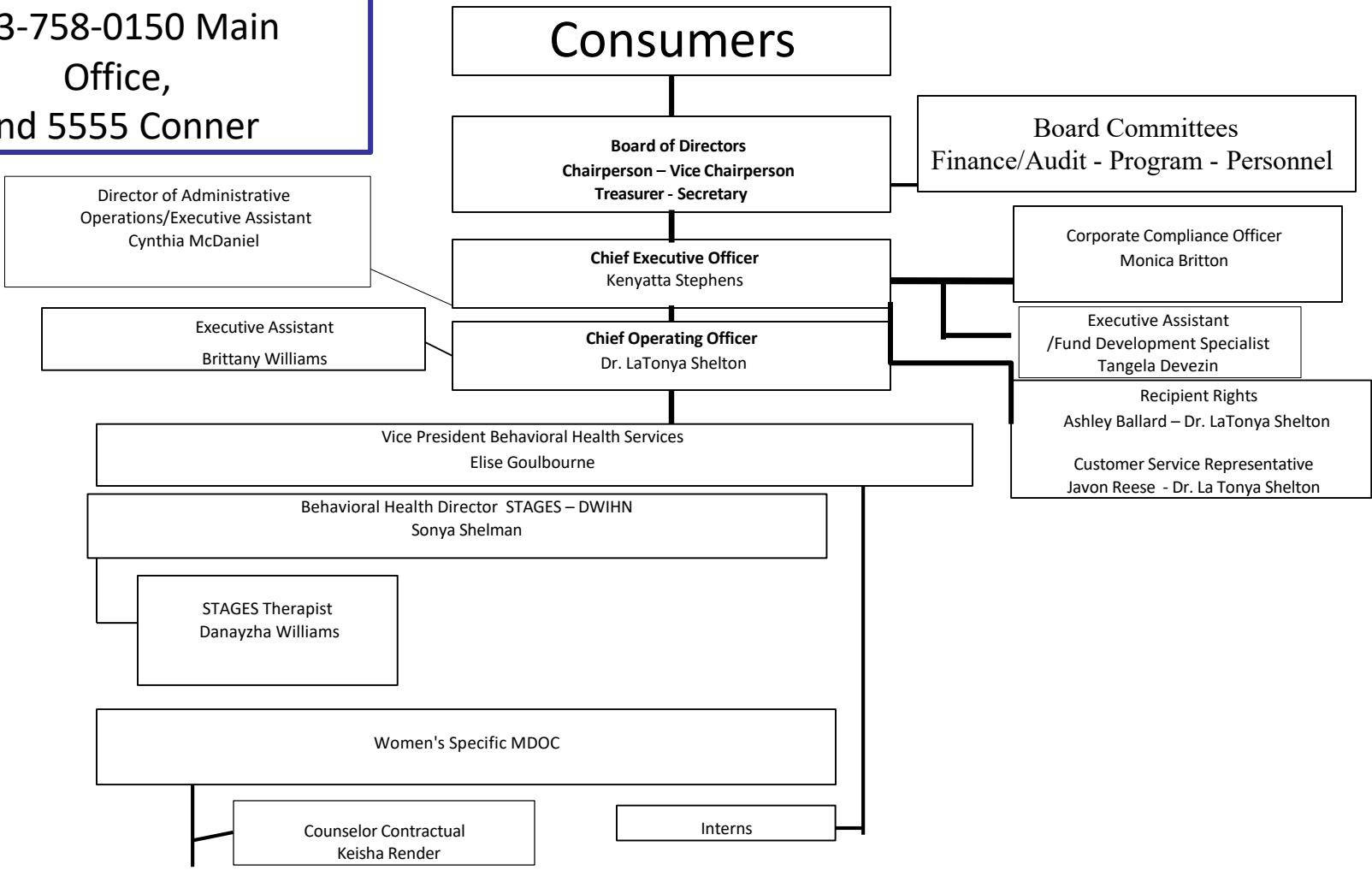
PAT Family Liaison/Parent
Educator Open Position

Data Specialist
Administrative Assist
Iris Cannon

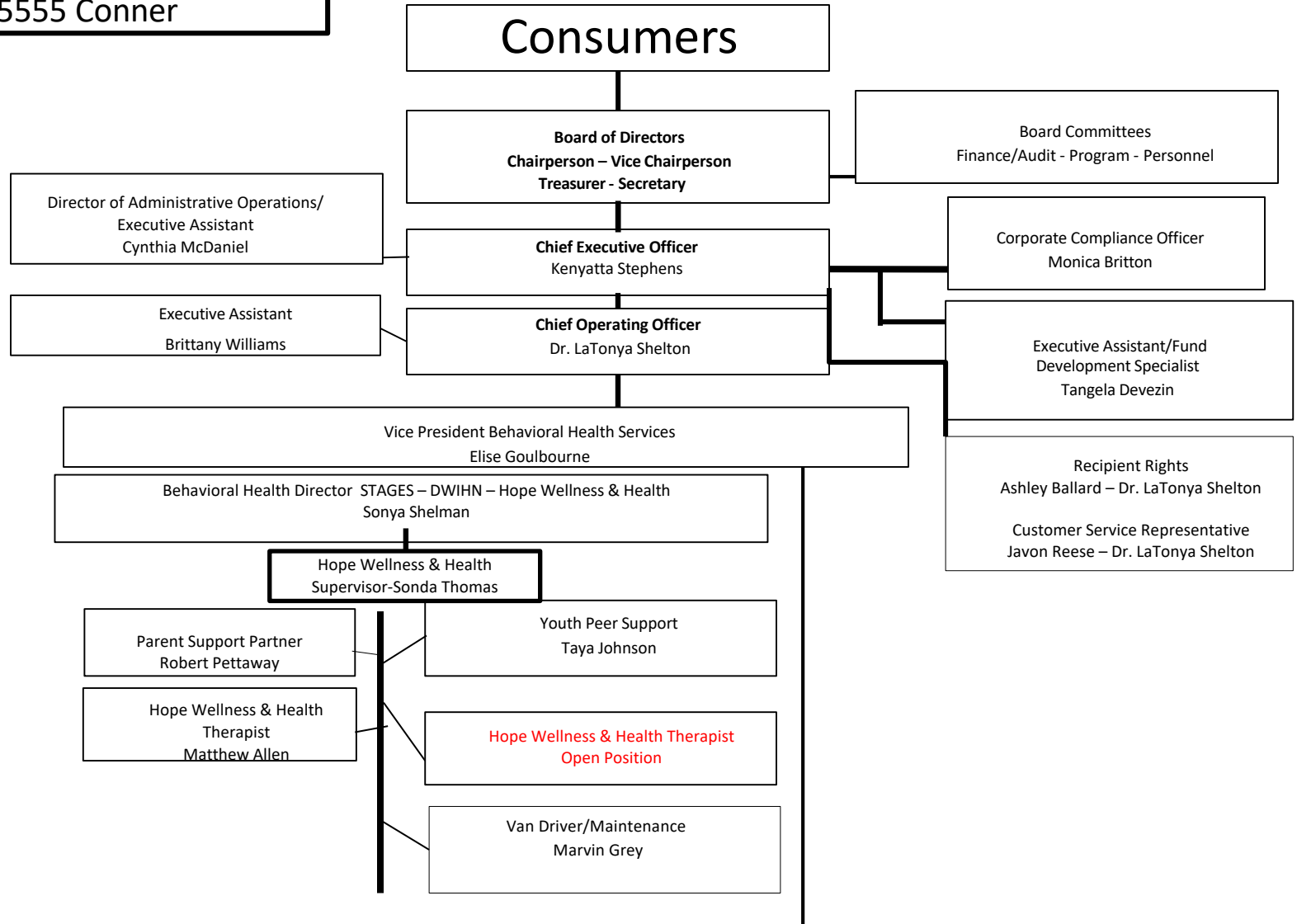
Early Childhood Intervention
Specialist
Open Position

Interns

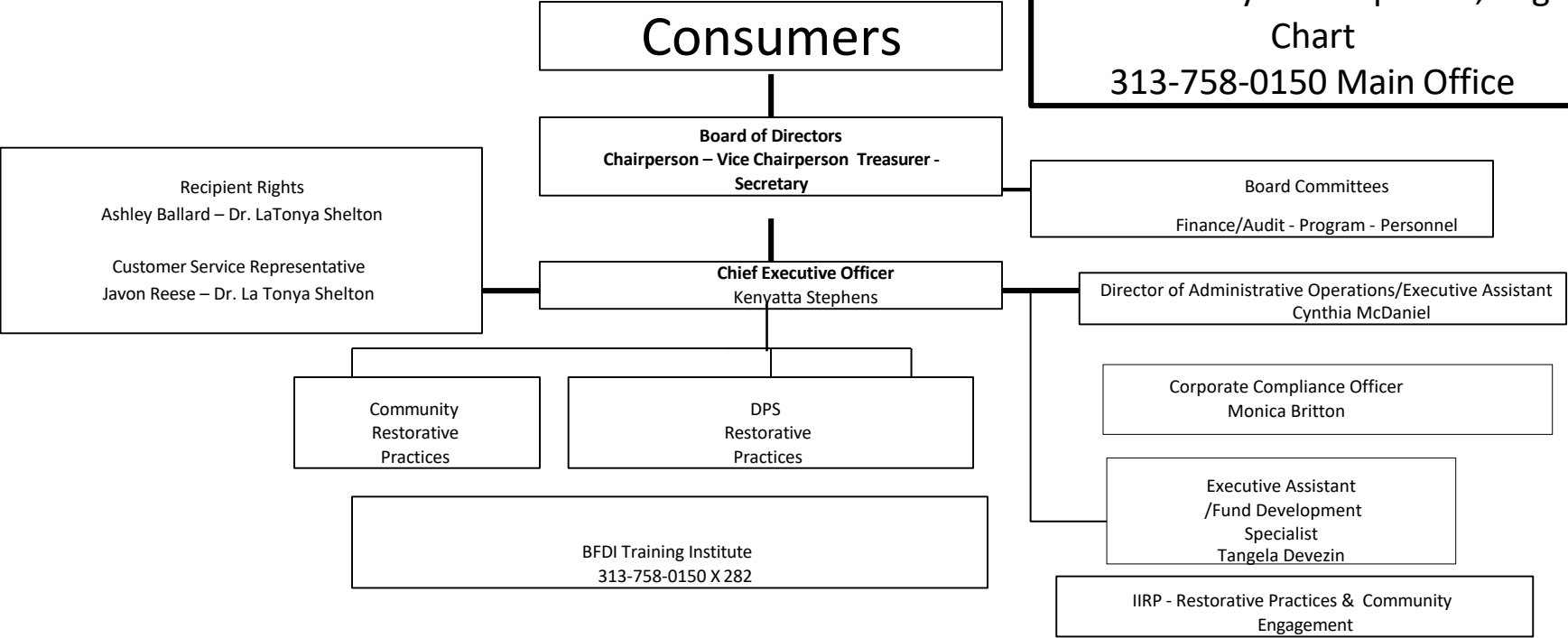
SUD
Org Chart
 313-758-0150 Main
 Office,
 and 5555 Conner



Hope Wellness & Health
 Org Chart 313-308-0255
 5555 Conner



Prevention - Restorative Practices, In School, YMCA and Community Development, Org Chart
313-758-0150 Main Office



Prevention – Suicide Prevention
JFS Org Chart
313-758-0150 Main Office

